

Gas chromatographic analysis

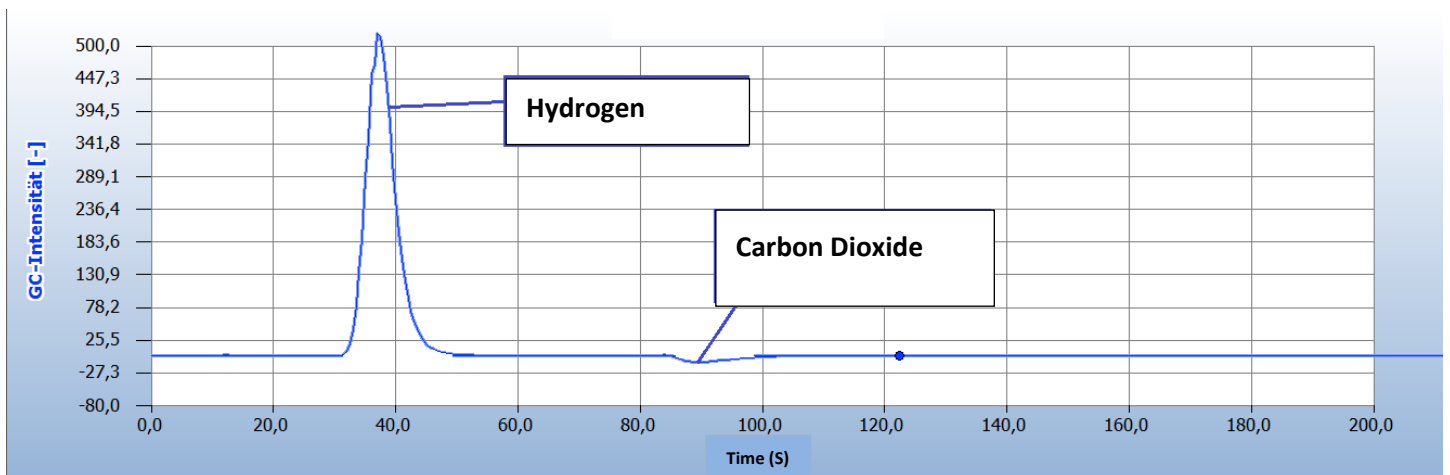
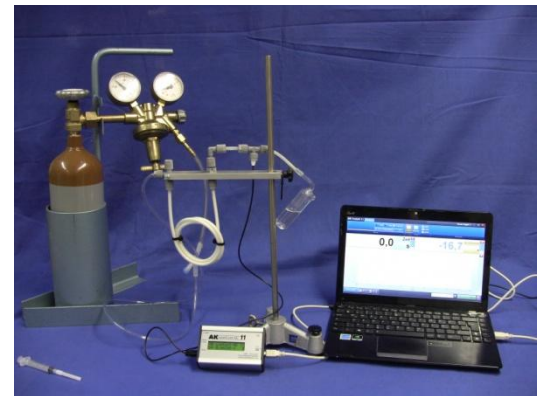
The composition of the mixture of gas can be determined through gas chromatography.

Stationary phase: pebble gel (red fillet)

Mobile phase: air (Aquarium pump)

Injection volume: 0,5 ml

Results:



Because hydrogen is better at cooling than air, the „Peak“ is in the positive area.

Carbon dioxide isn't as good at cooling as air, so the „Peak“ is in the negative area.